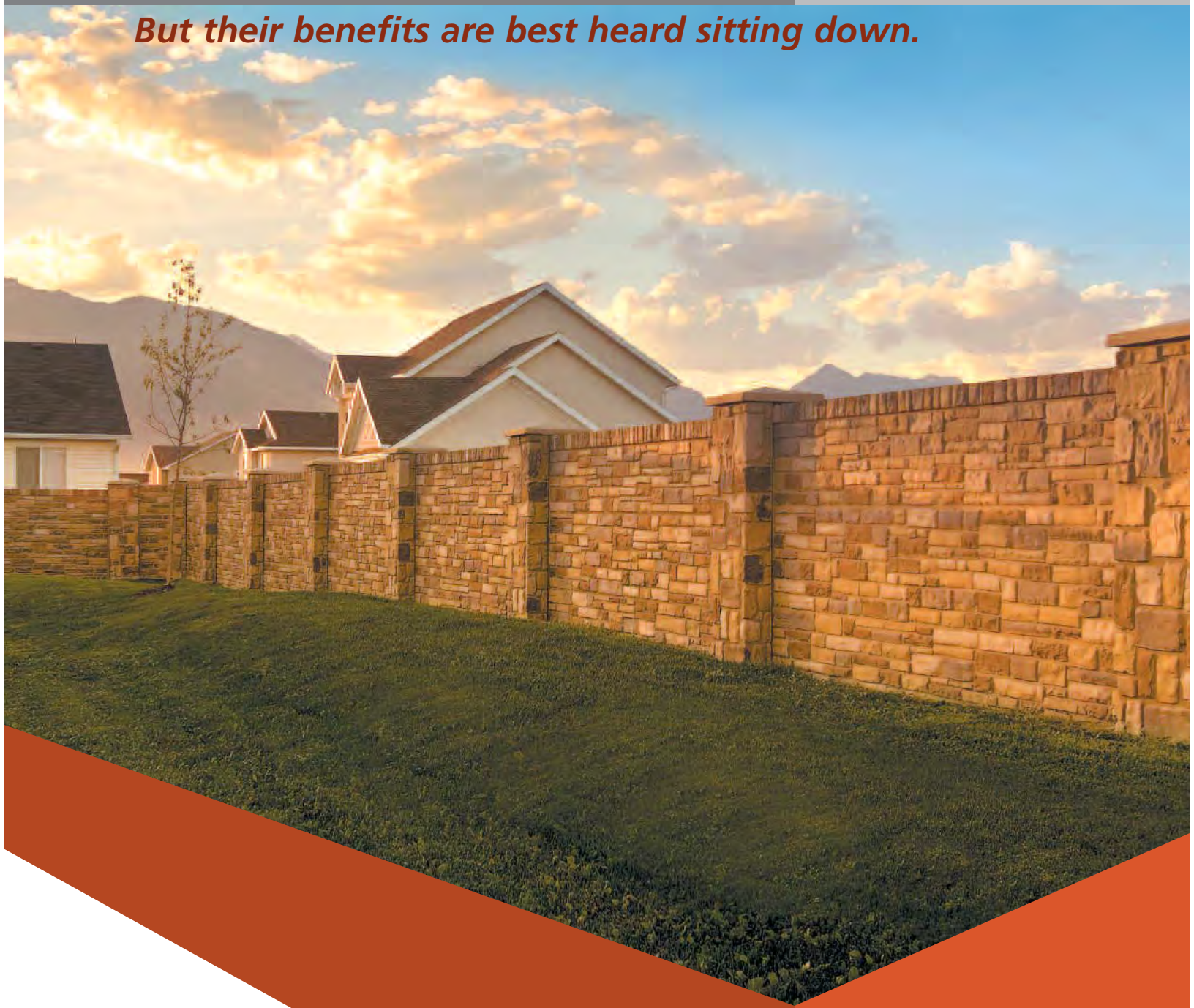


Verti-Crete walls are poured standing up

*But their benefits are best heard sitting down.*



# VERTI-CRETE

Precast has never shaped up

*quite like this*

**S**olid and flat. That's a typical description of the precast business: commodity products with steady demand, but with very low margins. Now Verti-Crete is turning that concept on end.

Our precast panel and post systems allow you to add breadth to your product line—and do it without adding strain to your facilities or labor pool. We add exclusivity to a proprietary product by protecting licensee rights in defined territories. But best of all, Verti-Crete products are as attractive to your customers as they are to your business.

## A SURFACE LOOK AT VERTI-CRETE

When customers consider a Verti-Crete product, the first thing they'll notice is the masonry-true appearance. Our proprietary method of vertically casting panels allows not just for beautiful aesthetics on both sides of a wall, but seamless monolithic panels and stone patterns that wrap around each post corner. Customers get a realistic, continual pattern throughout their wall—and our unique design allows for incredible flexibility in configuration. Beauty aside, Verti-Crete products are more durable than wood or vinyl fencing, and far more appealing than CMU block options. Bring the realities of budget and scheduling into view, and its quick install and affordability compared to stone masonry make Verti-Crete even more attractive in every way.



▼ Stucco Wall with Ashlar Columns

Ledge Stone Posts with Vinyl Fence ▼

▲ Ashlar Post with Wrought Iron

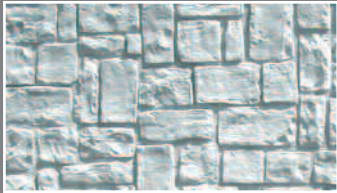


- Double-Sided Molded Stone Pattern
- Seamless Solid Panel Design

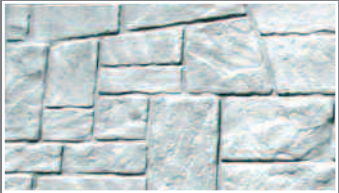


▲ Ashlar Privacy Wall with Dumpster Enclosure

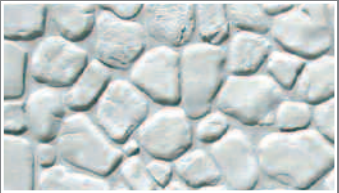
EIGHT REALISTIC SURFACES:



ASHLAR



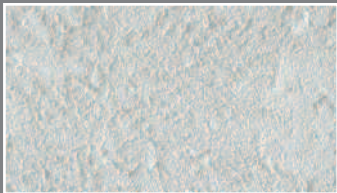
DRY STACK



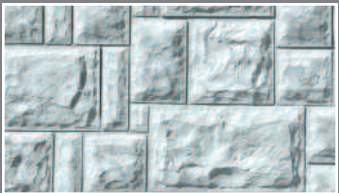
COBBLE



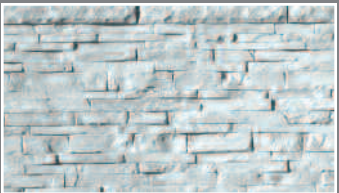
LEDGE STONE



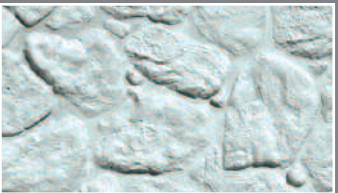
STUCCO



CASTLE STONE



DRYFIT LEDGESTONE



LAVA ROCK

## STAND-UP PRODUCTION WITH STAND-OUT EFFICIENCY

Adding Verti-Crete products to your existing business is an easy step—and it may be a natural extension of what you already do. Our vertically oriented precast systems require a minimal footprint in your yard and are simple to use with minimal training.

There are two systems within the Verti-Crete line:

### 1) THE VERTI-CRETE PANEL STACKER SYSTEM

For creating precast privacy and sound walls, the Verti-Crete Panel Stacker System implements an exclusive, battery design which allows you to pour multiple panels back to back. It's an incredibly efficient method in both time and space: compared to the traditional horizontal steel bed method, Verti-Crete requires half the labor and can produce up to 960 square feet in a 10' x 14' area.

### 2) THE VERTI-CRETE POST STACKER SYSTEM

To connect Verti-Crete panels or to sell independently for use with wrought iron, vinyl or other fencing materials, Verti-Crete posts will be among your most versatile products. Requiring just half a yard of concrete per six-foot post, the Verti-Crete post system is a great potential use for return concrete if you're a ready-mix producer or even if you contract to get it from an outside source. Our proprietary corner system allows for easy stripping and leaves a continual pattern (no seams!) around the entire structure.

In both systems, the molds you'll select are manufactured from highly durable polyurethane and are designed to last through hundreds of pours. (Other liners begin to tear after just a few dozen uses.) This ruggedness and ease of operation mean you'll have the capacity to pour and strip every day.

▼ Ashlar, Ledge Stone Combination with Wrought Iron



That's a big advantage considering the market potential—Verti-Crete products are perfectly suited for both residential and commercial developers. You can purchase Verti-Crete systems for creating 4', 6', or 8' high standard privacy walls. We'll also customize and even pre-stress enable commercial sound wall systems to your specifications.



▲ Lava Rock Privacy Wall

## SOLID INSTALLATION FROM THE GROUND UP

Unlike the hassle of precisely digging, maneuvering, and setting traditional H-posts, Verti-Crete posts are installed over footings with rebar anchors. After the footings are set, Verti-Crete's hollow-core posts are set over the rebar to rest firmly on each concrete base. Panels are then set in place to fit securely within notches cast into the posts. After each section is squared up and level, each post is filled with concrete to secure the connection between post and footing. This process results in a faster installation for you, and an even, more stable fence system for your customer.

What's more, Verti-Crete installation can be accomplished with an all-terrain forklift—a much easier alternative than a crane for getting the access you need on any type of site. To complete the job, Verti-Crete panels and posts can be stained to complement the theme of the property. Staining is easy and can be handled by a small crew with minimal training; a team of three can color-finish up to 1,000 linear feet per day.

## SEE WHAT SHAPES UP TO BE A GREAT INVESTMENT

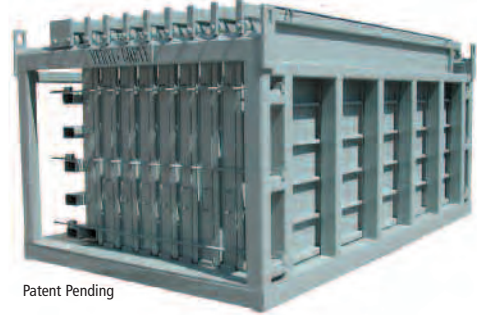
As a Verti-Crete licensee, you'll be able to take advantage of a proprietary product that can command exceptional profit margins. After all, the systems' efficiency allows you to pour 8-10 panels and 10 posts per day—that's up to 2,600 linear feet per month. Then consider

- Lower Labor Costs
- More Production in Less Space
- The Look and Feel of Stone from Precast Concrete



▲ Panel Installation

COMPACT VERTI-CRETE SYSTEMS  
ALLOW YOU TO PRECAST UP TO  
960 SQ. FT. IN A 10' X 14' AREA



Patent Pending

Ashlar Privacy Wall ▼

the potential value of using return concrete for posts, the lower labor requirement, and the fact that you set the selling price for your market, and the return on investment for Verti-Crete systems becomes very clear.

#### **THE VALUE IN BECOMING A VERTI-CRETE LICENSEE**

Verti-Crete systems are sold only to approved licensees who gain a defined geographic territory. As a licensee, you'll purchase your patent-pending equipment plus pay an annual licensing fee. In return, you receive the exclusive rights to produce Verti-Crete products in your area—moreover, you are free to sell wherever you choose. You may also utilize the Verti-Crete name, logo and other trademarked assets to customize your own marketing materials. Since Verti-Crete systems are proprietary, you'll have access to an exclusive product whose beauty and value customers will recognize and demand.

#### **PARTNER WITH A COMPANY YOU CAN TRUST**

Verti-Crete has been welcoming licensees across the United States and internationally since 2003. But our foundation goes back much further. Verti-Crete is part of a family of companies that have used the Verti-Crete Panel and Post Stacker Systems since 1999. Our heritage in the precast, concrete, and aggregate business reaches back for decades. So when you work with Verti-Crete, you'll have a relationship with people who have years of industry understanding, and who will support your business with innovative products for years to come.



▼ Dry Stack Privacy Wall



▼ Cobblestone Privacy Wall



## FIND OUT MORE ABOUT VERTI-CRETE TODAY

Please contact us with your questions—and plan to visit our facility to see Verti-Crete systems in use, watch an install, and observe the finishing procedures for yourself.

### Mail

P.O. Box 2347  
Sandy, Utah 84091

### Plant

16500 South Pony Express Road  
Bluffdale, Utah 84065

Phone 801 571-2028

Fax 801 571-3486

E-mail [sales@verti-crete.com](mailto:sales@verti-crete.com)

Web [www.verti-crete.com](http://www.verti-crete.com)

